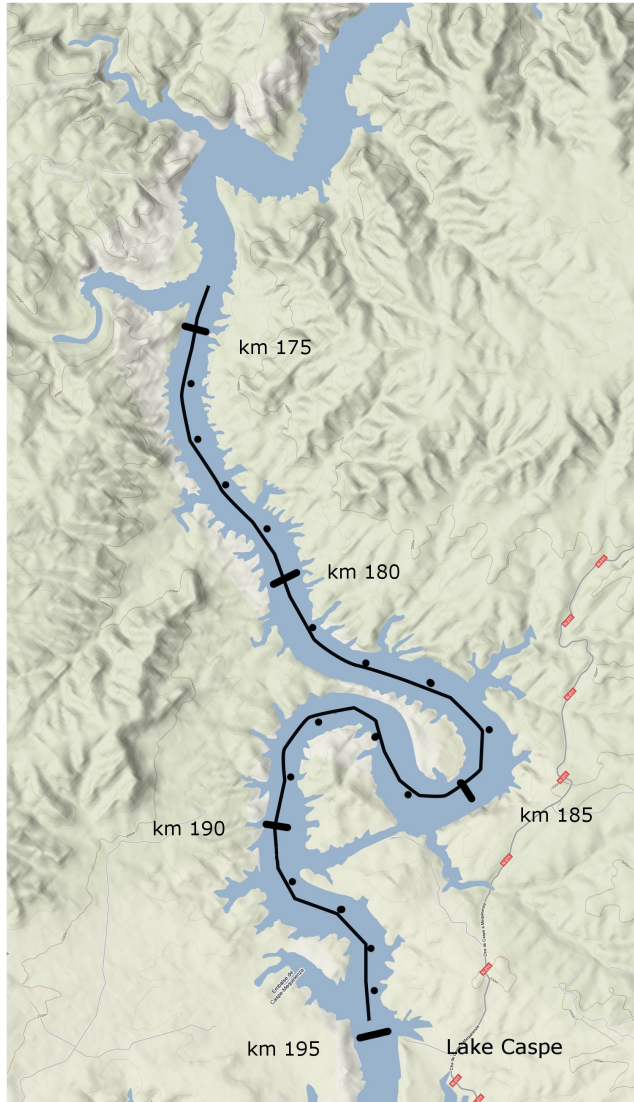


14. Lake Caspe to Mequinensa 1

KM 194 / KM 173.4 (20 KM)



km 173.4 Valcuerna

The layout is a meander, Magdalena island and a wide arch until Valcuerna. Next follows stage 13 with another arch until the Ebre narrows in Vallcoma mountains and Mequinensa dam is reached. There will be 38 km in the river, 3 km on foot to overcome the dam, and 2 km in the Segre upcurrent. If this is too much because of fatigue or strong winds, the only way to shorten it would be to spend the night somewhere in the middle, for instance in Valcuerna. There are no accomodation options.

km 184 Isla de la Magdalena

km 173.4 Valcuerna

On the left shore there is a hut for fishermen that can be reached by road from Candanos, about 12 km north (just in case some support team were available to provide equipment, shelter and food to spend the night there). This area is quite isolated, between Lake Caspe and Mequinensa there are no accesses close to a road.

km 184 Isla de la Magdalena

km 194 [D] Camping Lake Caspe