

10. Riba-roja to Flix

KM 131 / KM 116,5 (15 KM)



km 116.5 Flix

km 125 Riba-roja

km 129,5 Riba-roja Dam

km 131 [D] Càmping Riba-roja

Riba-roja dam, km 129,5

You can land at left, very close to the dam, but there is no trail and a steep ramp to climb for some 20 meters. It is short but inconvenient if you have to carry the kayak and the bags. After that a road reaches the dam quite soon. You must follow it and turn at right more or less perpendicular to the river (beware not going back to the dam). The access is not easy and there is plenty of sewage carried by the river. From landing to entering again, around 800 m.



km 124.3 Wharf

km 121, 7 Maurici and Queloi island, Nature protected area

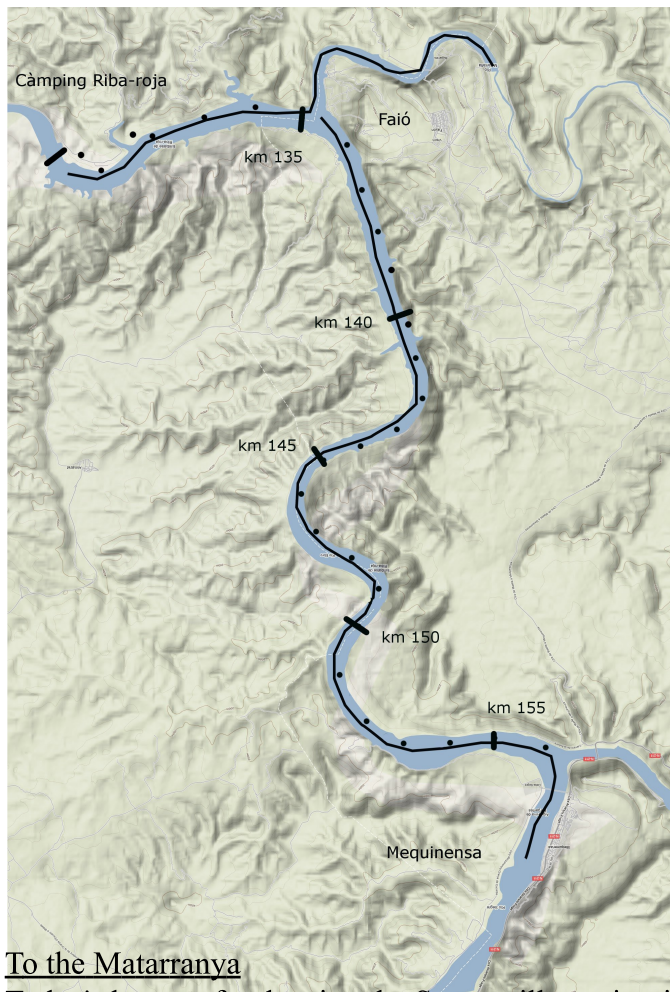
Flix dam km 116.9

On the right shore there is a convenient access appropriate if you want to go to the train station.

On the left, where a pipe plunges into the river there is another access. It's the one to be chosen if you want to enter into the river after the dam, as the entry is on the left shore and this allows you to skip crossing the bridge where there is a lot of traffic and little space for pedestrians. It's 400m walk (see etap 9)

11. 12. Mequinensa to Riba-roja

KM 156 / KM 131 (38 KM)



km 131 [D]
Camping Riba-roja

km 135 El Matarranya

km 139 Bell tower

km 140

km 145

km 150

km 155

km 156. El Segre

To the Matarranya

Today's layout after leaving the Segre will consists in a big "m", a long straight line up to Matarranya river and the old village of Faió. After that, another straight section to Badia Tucana marina point and Riba-roja camping. There are 38.1 km, 11 of them corresponding to Matarranya river section, 2 to the Segre and 25 to the Ebre. The Matarranya section could be skipped and that leaves you with a 27 km stage. Another option for doing the Matarranya would be spending the night in Faió's camping, doing only a 24 km stage, and wait for the next day to do the Matarranya, overcome the dam and finish in Riba-roja or even in Flix.

km 156 Start at Mequinensa Some submerged buildings. On top of a hill, the old Mequinensa castle, witness of the times when this was a frontier area, in the 12th century.

km 141.1 A submerged chimmeney.

km 139.6 The bell tower of the former Faió church.

km 135.4 The Matarranya

An abandoned building that once logged the Renfe workers that built the rail line between Zaragoza and Barcelona. Near the river mouth there is a wharf [R]. 1 km up later a camping [R] and soon a large area with a wide wharf and restaurants.

Faió : a bit far from the river.

HOSTAL ROCA, C/ Ronda del Amanecer, 25, Tel. 976 635 610,

Eloksan@terra.es

RESTAURANTE-CAMPING, FAYÓN FISHING, C/ Ebro, S/N, Tel. 976 63 56 95,

CAMPING FAYÓN, C/ Ebro, S/N, Tel. 976 63 57 40

km 3.2 The remains of the old train bridge out of a tunnel from de old village.

km. 3.5 La Pobla de Massaluca. A bit far from the river, too, there's a marina and a development just before the bridge.

Kayaking Terra Alta. kayak rental

Camping Port Massaluca +34676022779, info@portmassaluca.com, TV 7231 km 29

At 5 km up, the river is too shallow to go on paddling.

back to Ebre

km 131.91 Badia Tucana. Marina and development.

km 131 Camping Riba-roja

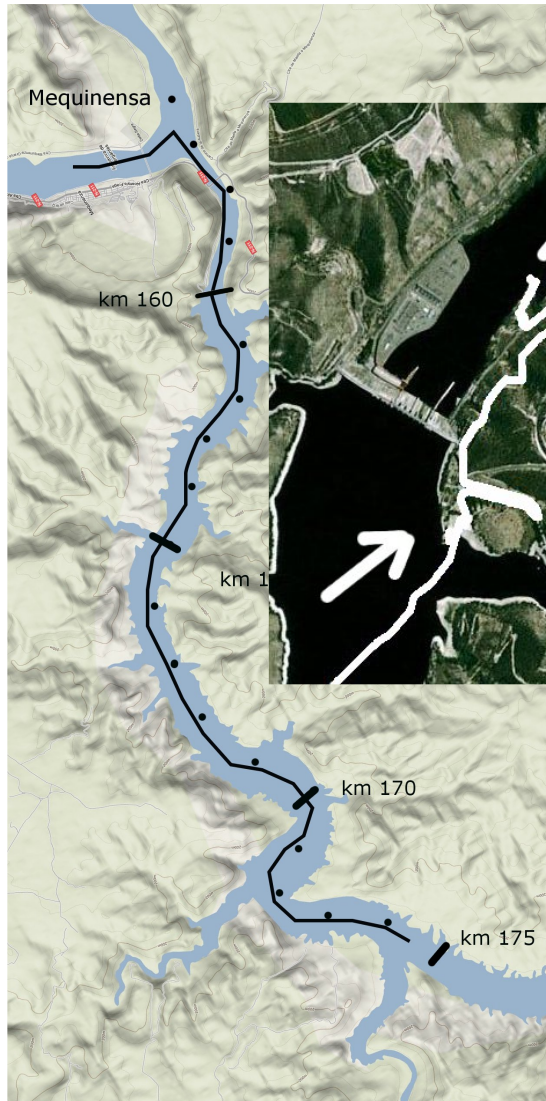
Easy landing. Reception is in a bar near the road, 5 minuts walking.

There are mainly motorhomes, just a few tents.

Camping Riba-roja, Tel.: +34 977265083, Fax.: +34 977265140

13. Lake Caspe to Mequinensa 2

KM 173.4 / KM 156 (18 KM EBRE, 3 KM PRESA, 2 KM SEGRE)



km 156
Segre at Mequinensa



km 160. Mequinensa
dam

km 173.4 Valcuerna

km 172

Geological shapes with strata,

Vultures can be seen when crossing serra de Vallcoma

km 160 [D] Mequinensa dam.

the escape is on the right shore. There is a convenient ramp. The trail goes back until it meets with GR99, Ebre long distance trail. Go on for a while and leave the paved road that would lead to the national road and keep walking parallel to the river until the dam. After descending you meet a paved road, quite far from the dam. As there is no entrance here, you must go back in the dam direction until you find a suitable place.

km 159 [D] Back to the river after the dam.

km 167.5 Bridge on the Ebre

km 156. Segre river.

You paddle in front of Club Nautico, where you could land. If you want to spend the night at Camping Octogesa you still have to paddle 2 km until you find a ramp at your left, in front of the camping.

Mequinensa

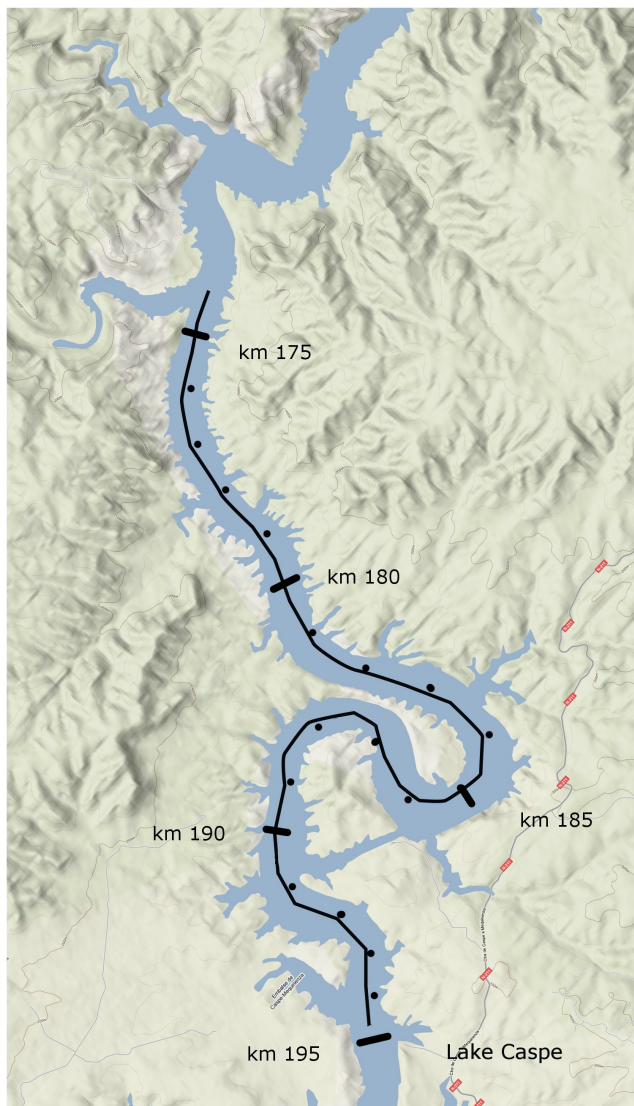
CAMPING OCTOGESA Ctra N-211, Km 314 Tfno 974 464 431

Hostal RODES Calle H, 1 Tfno: 974 464 119

Hostal Mequinensa C/ Prolongación D,7 Tfno/Fax 974 465 061 Móvil 679439522

14. Lake Caspe to Mequinensa 1

KM 194 / KM 173.4 (20 KM)



km 173.4 Valcuerna

The layout is a meander, Magdalena island and a wide arch until Valcuerna. Next follows stage 13 with another arch until the Ebre narrows in Vallcoma mountains and Mequinensa dam is reached. There will be 38 km in the river, 3 km on foot to overcome the dam, and 2 km in the Segre upcurrent. If this is too much because of fatigue or strong winds, the only way to shorten it would be to spend the night somewhere in the middle, for instance in Valcuerna. There are no accomodation options.

km 184 Isla de la Magdalena

km 173.4 Valcuerna

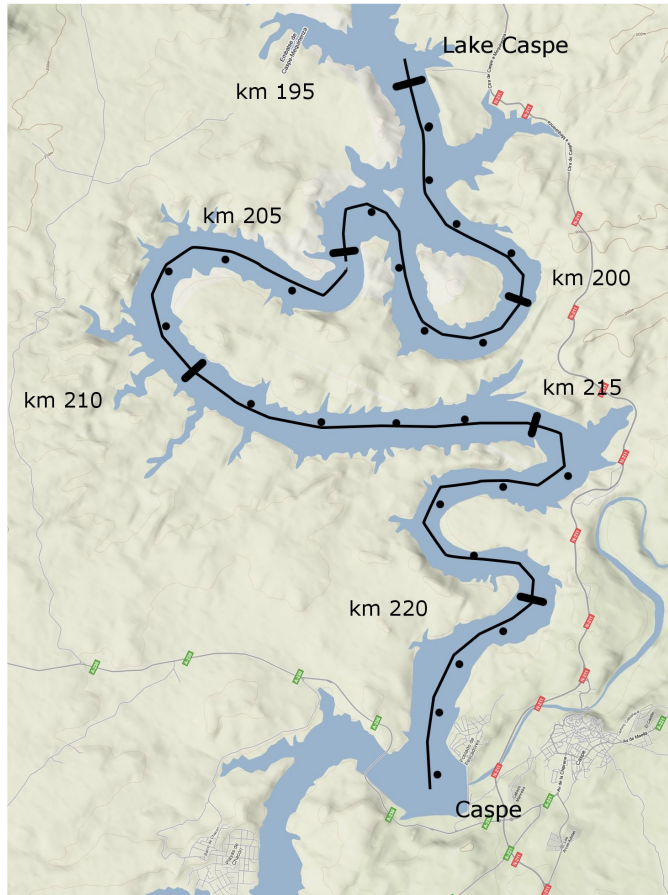
On the left shore there is a hut for fishermen that can be reached by road from Candasnos, about 12 km north (just in case some support team were available to provide equipment, shelter and food to spend the night there). This area is quite isolated, between Lake Caspe and Mequinensa there are no accesses close to a road.

km 184 Isla de la Magdalena

km 194 [D] Camping Lake Caspe

16. 15. Caspe to Camping Lake Caspe

KM 224 / KM 194 (30 KM)



km 194 Camping Lake - Caspe

km 204

km 224 [D] CASPE

CASPE

Train

Accommodation (I mention only the ones near the station):

Pensión Los Jardines, Obispo García 1 - 976632248

Hotel Magallón, Plaza del Obispo Cubeles, s/n - 976 630 222

Hotel Mar de Aragon, Plaza del Obispo Cubeles , s/n - 976 639 051

It's about 2 km from the station to the access in the river. Follow Obispo Garcia street, and after Hotel Magallon parking turn to the right. Huesca street will become a road leading to the dam, crossing under a rail bridge.



km 224 [D] Access to Ebre in Caspe

The layout consists in 4 meanders, like two "waves", one small, one big, followed by an island, in the shape of a drop, that could be skipped.

1km later we find Caspe's wharf in Urbanización El Dique.

km 204 End stage 16

km 194 [D] Camping Lake Caspe, 976634174