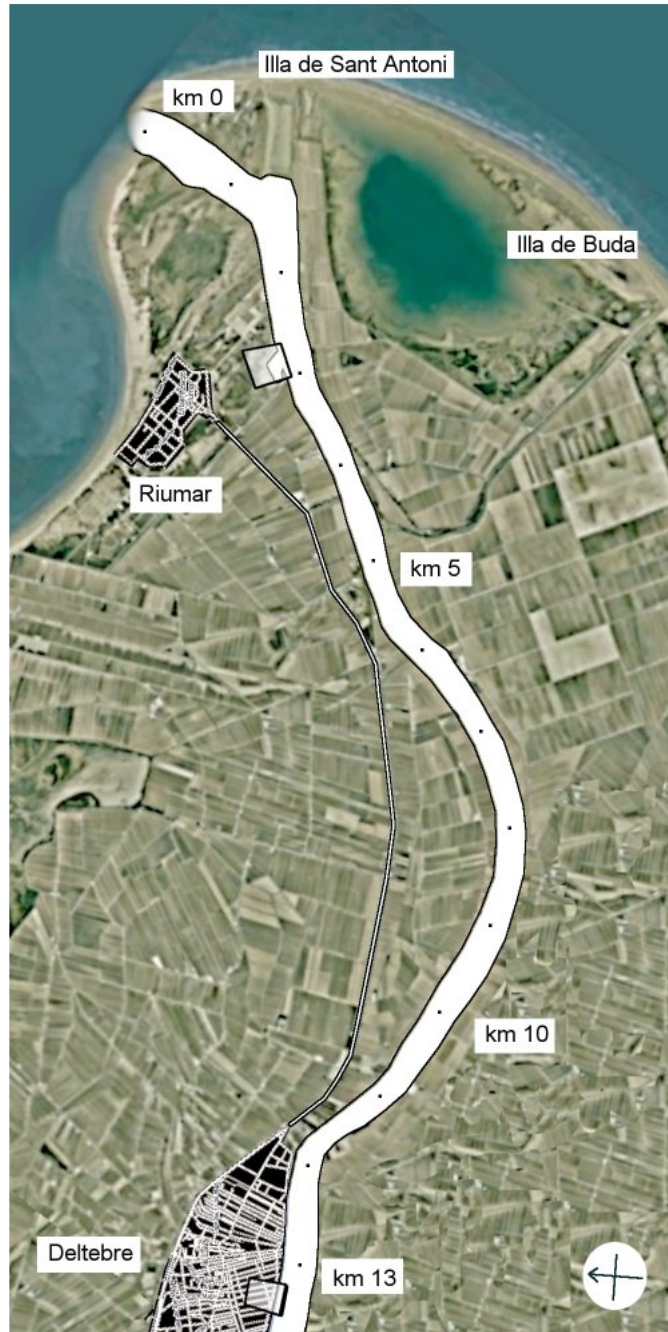


# 01. From Deltebre to the sea (13.3 km)

KM 13.3 / KM 0



km 0. The sea!

km 3 Sports harbour

km 13.3 [L] Deltebre wharf

Final stage, great expectations for reaching the sea. The landscape becomes more even until sky and river merge in the horizon.

km 13.3 Deltebre's wharf

km 0 The Sea

## End

From here, either you go west along the sea shore for about 2km until reaching Riumar village, or go back the river upwards until Deltebre. If you don't have vehicle support waiting for you, you will have to call for a taxi to pick you up and driving until where you have your car or the next train station in l'Aldea or Tortosa.

## **Taxis in Deltebre**

BRUNO CARRERA: Tel. 977 489 811, 669 140 697

JOSÉ PÉREZ: Tel. 977 480 344

JOSÉ REDÓ: Tel. 629 724 153

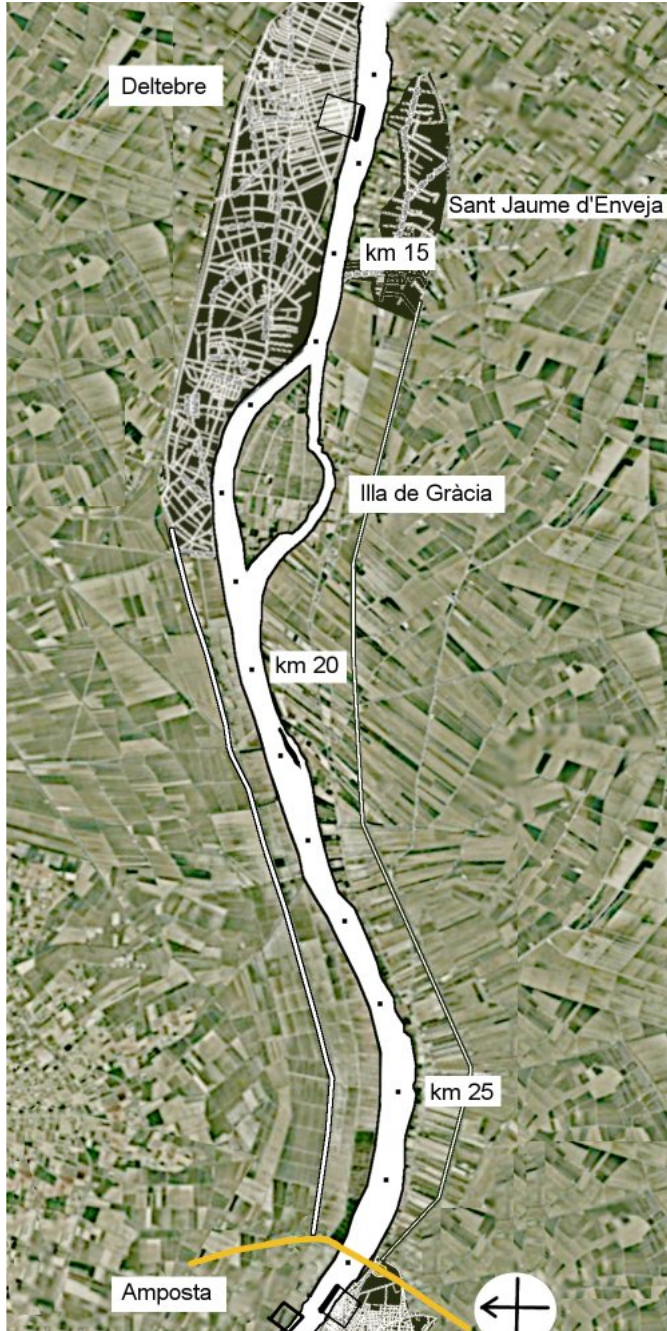
JACINTO PONS: Tel. 608 934 273, 977 481 108

BERQU S.L.: Tel. 977 481 546, 977 480 333, 617 480 581

DELTA TAXI "MORRUDET": 670 272 235, 977 489 479

## 02. From Amposta to Deltebre (14.4 km)

KM 27.7 / KM 13.3



km 13.3 [R] Deltebre wharf

km 13.4 Ship pass. Olmos ferry

km 15 Ship pass

km 19 Gràcia Island

km 27.7 [L, R] Amposta wharf

This trip penetrates the Delta landscape, flat horizon, palm trees, reeds.

km 27.7 [R] Amposta wharf

km 19 Gracia island

I take the left, the island on my right, and soon the first buildings of Deltebre appear. 1 km after the island there is a Ship pass.

km 13.3 [L] Deltebre wharf

1.5 km after the first ship pass, we find another one, Olmos ferry. 100 m later on the left shore I land in Deltebre wharf.

Where to stay

Delta hotel, Av. del Canal, camí de la Illeta, s/n. Tel. 977 48 00 46

Hotel Rull, Av. Esportiva, 155, Telf: 977 48 77 28, e-mail: [hotelrull@turisrull.es](mailto:hotelrull@turisrull.es)

Casablanca, Leopoldo Segarra, 49. Tel: 977489291

Hostal Paca, c. Flamenc, 9. Tel 977 267 394

El Buitre, Avda. Goles de Liebre ctra. Riumar, Tel 977480528

Sant Jaume d'Enveja

Where to stay

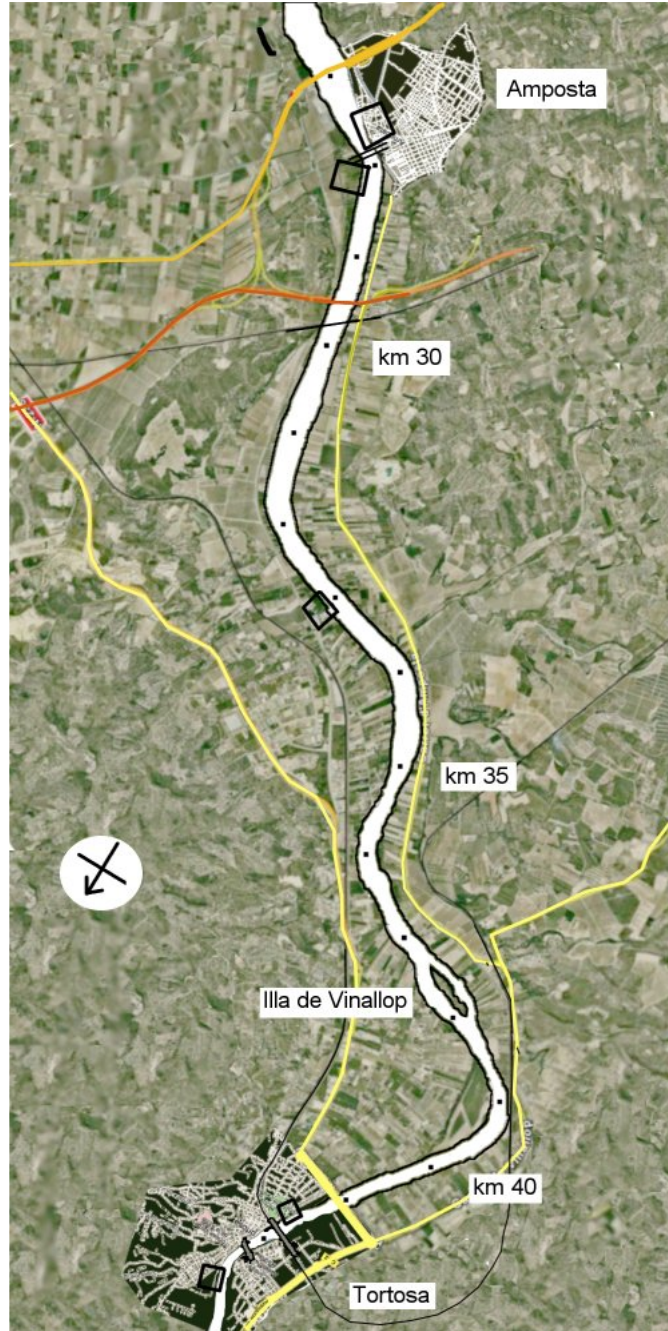
Hostal Delta Park, C/ Dr. Canicio, 10, 977 468 607 / 977 468 096

From Deltebre or from Sant Jaume d'Enveja several bike trails can be



## 03. From Tortosa to Amposta (13.8 km)

KM 41.5 / KM 27.7



km 27.7 [L, R] Amposta wharf

km 33 [L] Campredó wharf

km 41.5 [L] Tortosa wharf

This stage has plenty of bridges. One after leaving Tortosa, two more before Amposta, rail and road, and last but not least the old bridge that in summer 2007 was being restored.

km 41.5 [L] Tortosa wharf

km 33 [L] Campredó wharf

km 29.5 Two bridges

Ancient bridge in Amposta, Work of J. Eugenio Ribera, 1921

km 27.7 Amposta wharf [R] [L]

There are two wharfs, one on each shore. On the right there is a restaurant where you can have a drink or lunch while keeping your kayak in sight,

Amposta is the capital of Montsia department, with about 19.000 people. I used to be a point of control for ships going from Tortosa to the sea.

Train station

Where to stay

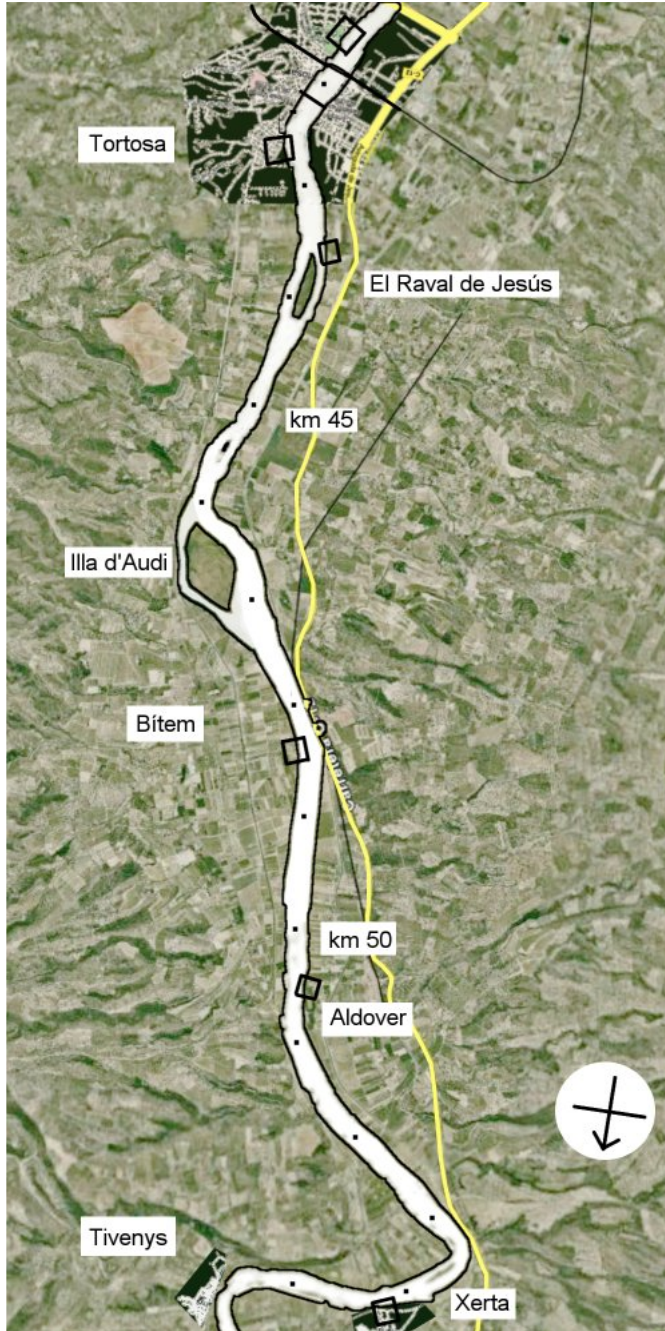
Hostal Baix Ebre, Tel. 977 70 00 25

Hotel Montsià, Av. de la Ràpita, 8, Tel. 977 70 10 27

Hotel Mediterrani Blau, Carrer Eucaliptus nº 1 Urbanització Eucaliptus (Amposta), Tel. 977 479 310

## 04. From Xerta to Tortosa (12.3 km)

KM 54.3 / KM 41.5



km 41.5 [L] Tortosa wharf

km 42.5 [L] l'Escorxador wharf

km 43.6 Jesús i Maria wharf

km 48.5 [L] Bitem wharf

km 50.5 [R] Aldover wharf

km 54.3 [R] Xerta wharf

km 54.3 [R] Xerta wharf

km 50.5 [R] Aldover wharf  
About 600 m far from town

km 48.5 [L] Bitem wharf  
About 1000 m far from town

km 43.6 [R] Raval de Jesús i Maria wharf  
A suburb of Tortosa

km 42.5 [L] Escorxador wharf  
After the Escorxador we paddle under a bridge and then we can see a memorial for the fallen in the cruel Ebre Battle in 1938. After a second bridge, a rail bridge, on the left shore I land at Tortosa wharf, just in front of Teodor Gonzales park.

km 41.5 [L] Tortosa wharf  
Train station

Tortosa is the capital of the 'Baix Ebre' department, with a population of 35.000. There are notable gothic and renaissance buildings, the Catedral, the "l'lotja" (ancient market), and Sant Lluís and Sant Domènec Colleges.

### Where to stay

Hotel Tortosa Parc, Conde de Bañuelos 10, 43500 Tortosa, 977 446 112, [reservas@hoteltortosaparc.com](mailto:reservas@hoteltortosaparc.com)

PARADOR DE TURISME CASTELL DE LA SUDA - (PN\*\*\*\*), Castell de la Suda, s/n, Tel: 977 44 44 50

HOTEL CORONA TORTOSA (H\*\*\*), Plaça Corona d'Aragó, 7, Telf: 977 58 04 33, e-mail: [hcorona@sbgrup.com](mailto:hcorona@sbgrup.com)

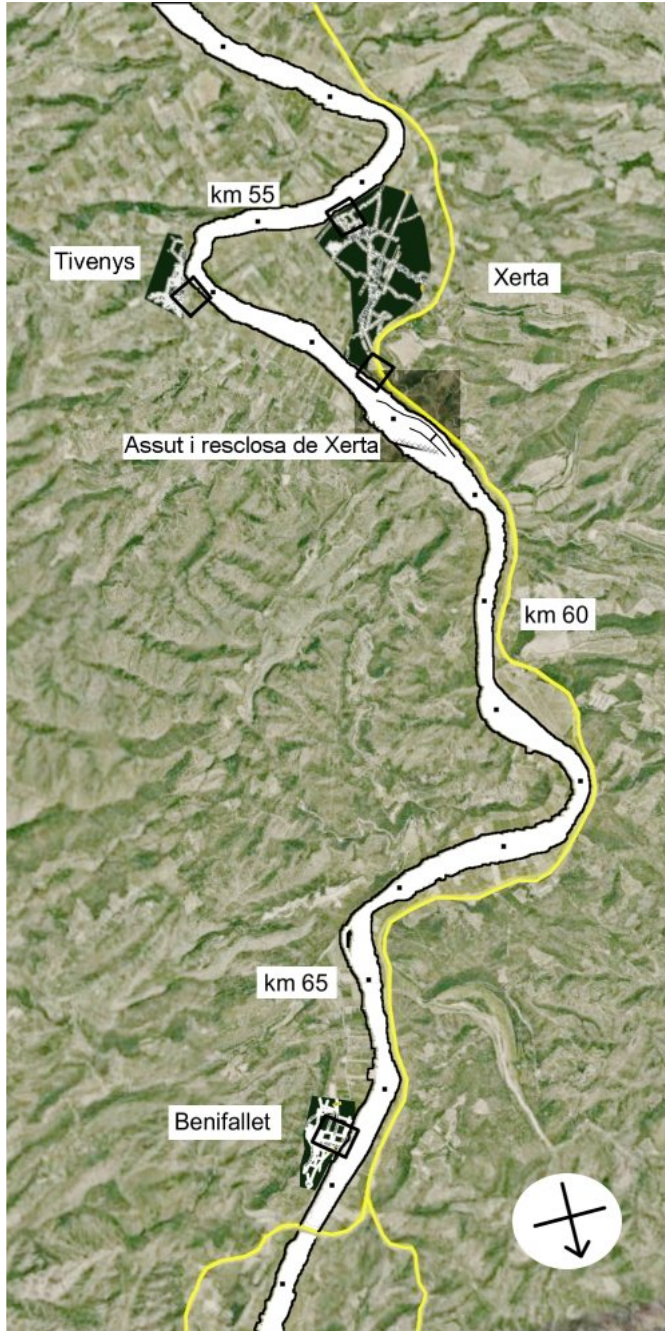
HOTEL BERENGUER IV (H\*\*\*), C/ Despuig, 36, Tel: 977 44 95 80, e-mail: [berenguer@key-hotels.com](mailto:berenguer@key-hotels.com)

HOTEL L'ARDIACA - (H\*), Carretera Tortosa-L'Aldea Km 4'400,



## 05. From Benifallet to Xerta (12.3)

KM 66.6 / KM 54.3



km 54.3 [R] Xerta wharf

km 56 [L] Tivenys wharf

km 57.6 [R] Assut (lock)  
wharf

km 58.5 ! Xerta's lock

km 66.6 [L] Benifallet wharf

The Ebre river flows in meanders between hills down to Xerta's lock. During sail season, usually from april to early november (check [www.ebrenavegable.com](http://www.ebrenavegable.com)) the weir is in service and every hour opens for all kind of boats, including kayaks. Hors season it's possible to land at a ramp, at the right side at the beginning of the channel, and walk down to the lock's wharf. But it is a 800m walk and there are no facilities to carry the boat.

Weir's phone: 977 47 31 58

[km 66.6 \[L\] Benifallet wharf](#)

[km 58.5 Xerta's lock](#)

[km 57.6 \[R\] Lock's wharf](#)

Just after the weir there is a wharf on the right shore. We would use it to reenter back into the river hors sail season.

[km 56 \[L\] Tivenys wharf](#)

About 150m far from town.

[km 54.3 \[R\] Xerta's wharf](#)

Here there is a nice restaurant where we can have some drinks or even eat lunch while watching the kayak tied up at the wharf.

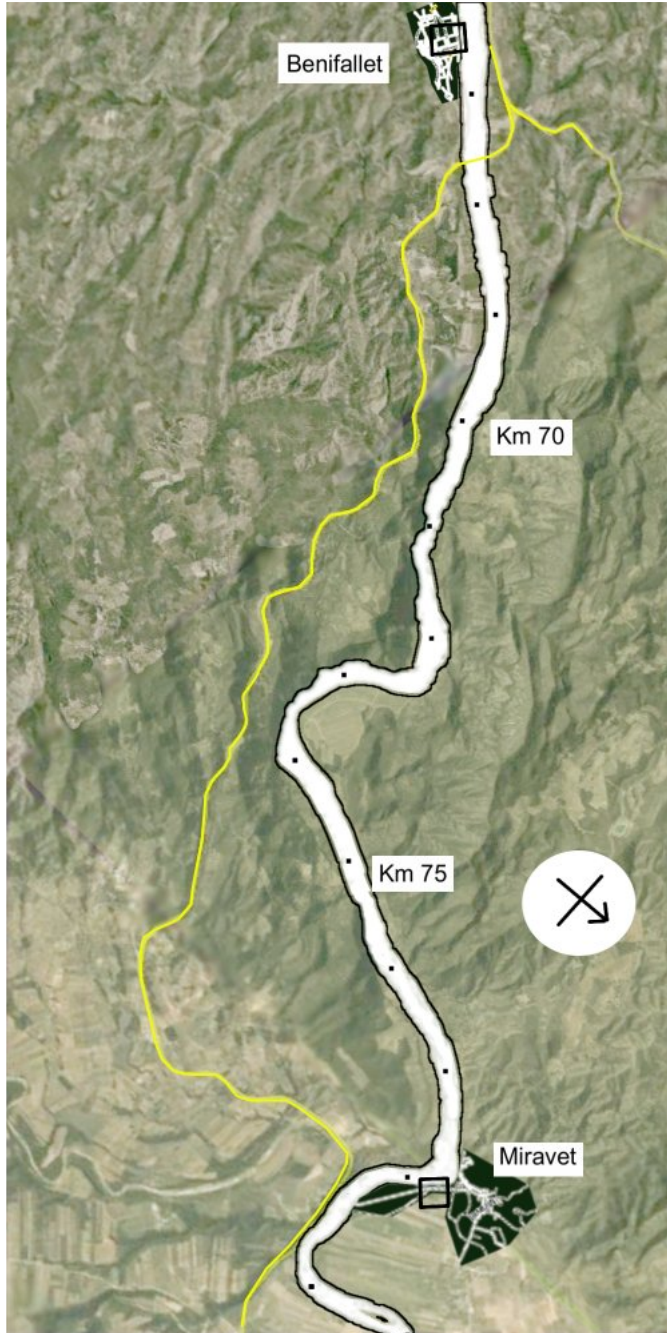
Where to stay

Hotel Villa Retiro Resort 5\*, Camí dels Molins, 2. Tel: 977 473 003, Fax: 977 473 320

Alberg Assut, C/ Major, 63, Tel. 678 676 767 , [info@albergassut.com](mailto:info@albergassut.com)

## 06. From Miravet to Benifallet (11.1 km)

KM 77.7 / KM 66.6



km 66.6 [L] Benifallet wharf

km 77.7 [R] Miravet wharf

This is one of the most beautiful stages, paddling between hills.

km 77.7 [R] Miravet wharf

km 67.8 near Benifallet

We see the C-12 route bridge that leads to Pinell de Brai through C3142

km 66.6 [L] Benifallet wharf

Where to stay

Hotel Pepo, c.Piscines 1. 977 462 200 - email: [info@restaurantpepo.com](mailto:info@restaurantpepo.com)



## 07. From Móra to Miravet (12.6 km)

KM 90.3 / KM 77.7



km 77.7 [R] Miravet wharf

km 82.5 [L] Ginestar wharf

km 82.6 [R] Benissanet wharf

km 90.4 [L] Móra la Nova wharf

km 90.6 [R] Móra d'Ebre wharf

Soon after leaving Móra there are two bridges. Pass Galatxo Island following the left branch and three meanders later you can see the castle of Miravet.

km 90.3 Móra la Nova (or Móra d'Ebre) wharf

Two bridges, an industrial pipe (km 88)

km 82.6 [R] Benissanet wharf

About 700 m far from town

Where to stay: Hotel Mas Taniet. Camí de Móra s/n. 977 40 76 04

km 82.5 [L] Ginestar wharf

About 1000m from town

Where to stay: Ca Garrió. c. Creu 24. 977 40 19 09

km 77.7 [R] Miravet wharf

If you've never been in Miravet, may I suggest spending there some hours, visiting the village and the Castle (guided tours on sunday, check schedule at 977 40 73 68).

Miravet was an strategic site for controlling the river. Muslims resisted until 1152 when Berenguer IV conquered it after a long siege and gave it to the templars. It was this monk-soldier order that transformed the fortress into the form that we can see today, a castle-convent, one of the best romanic religious-military buildings in europe. When templars were persecuted the castle was under siege again, it was won and given to another religious order. By 1835 as result from a law that expropriated lands and buildings from religious orders its property and use became private.

Tourism: Lo racó del temple. C. Riu 14

Regional delicatessen shop and touristic information point.

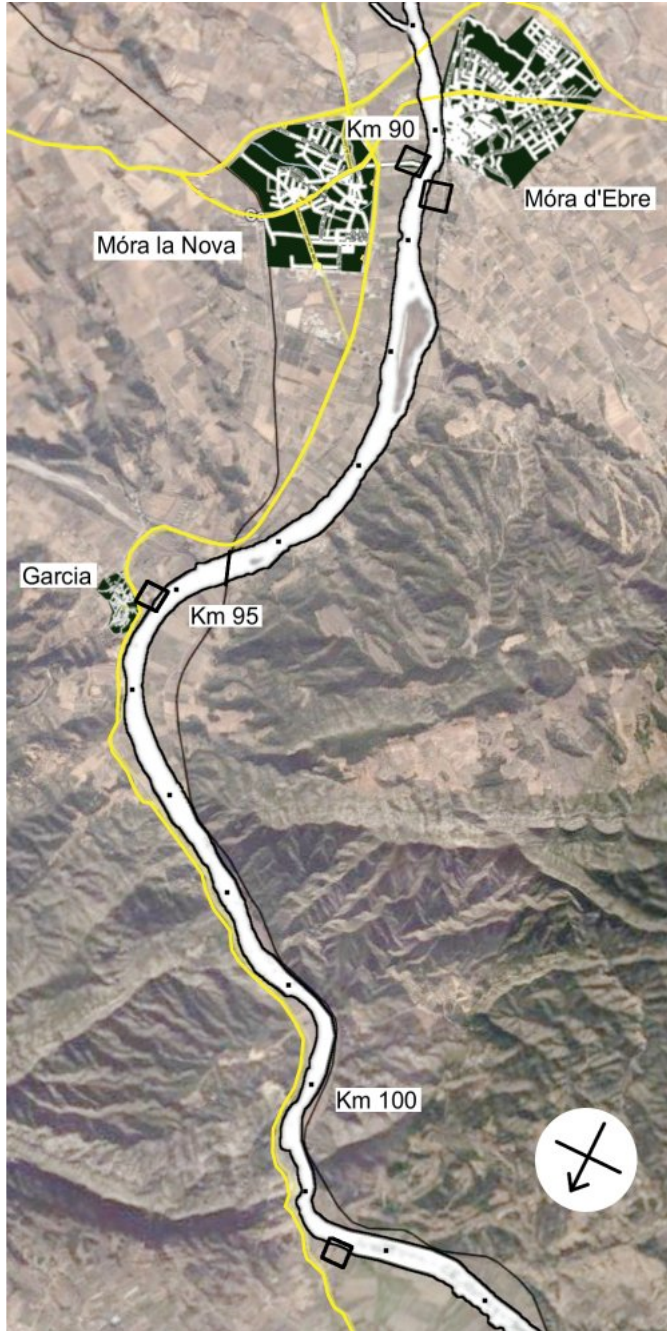
Where to stay

Cal Pigat. C. Major 20. 977 40 70 13

Mas la Torre. C. Creu 2. 977 40 71 23

## 08. From Vinebre to Móra (11.2 km)

KM 101.5 / KM 90.3



km 90.4 [L] Móra la Nova wharf

km 90.6 [R] Móra d'Ebre wharf

km 94.5 rail bridge

km 95.2 [L] Garcia wharf

km 101.5 [L] Vinebre wharf

Easy stage to Móra d'Ebre, the river flows between hills.  
In Móra la Nova there is train station.

km 101.5 [L] Vinebre's wharf

km 99 Donkey's way  
Here the river gets narrower

km 95.2 [L] Garcia's wharf

km 94.5 Train bridge

km 90.6 [R] Móra d'Ebre wharf

Móra d'Ebre is the capital from the "Ribera d'Ebre" department. Its population is about 5.000.  
In the 18th it was a customs point for fluvial trade.

Where to stay

Fonda Turú. Av. Comarques Catalanes, 1. Tel. 977 40 03 30  
Hostal Sant Jordi. C. Mestres, 1. Tel. 977 40 04 58

km 90.4 [L] Móra la Nova wharf

The wharf is 500m far from the town.  
Train station

Population : 3.200

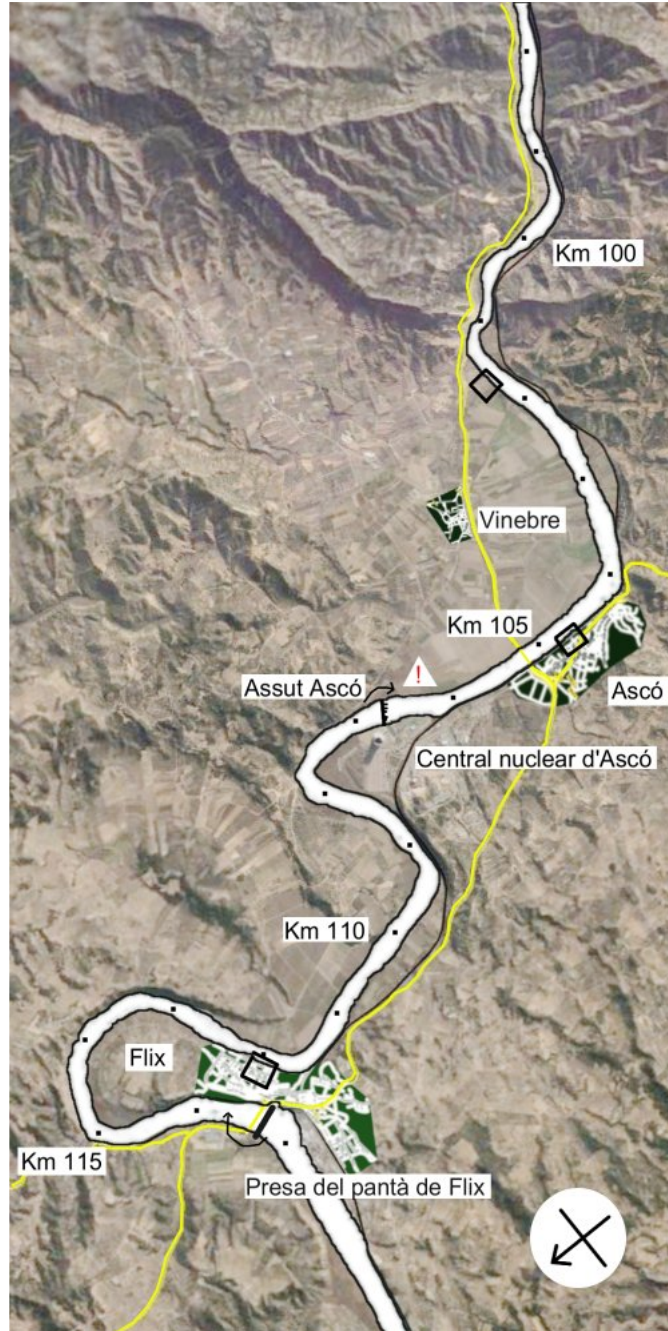
Where to stay

Hostal Fontdemora. C. Major, 114. Tel. 977 40 0204  
Fonda Barcelona. C. Major, 51. Tel. 977 40 03 36  
Mas Subirats. Ctra. Nova de Garcia, s/n. Tel. 977 40 28 54  
Hotel Móra Park. Ctra. Tivissa s/n. Tel. 977 40 009 29



## 09. From Flix to Vinebre (15km)

KM 116.5 / KM 101.5



km 101.5 [L] Vinebre wharf

km 104.7 [R] Ascó wharf

km 106.8 ! Ascó lock!

km 112 [R] Flix wharf

km 116.5 [L] after de Damm

km 116.5 [L] Into the river after the dam

The access is not easy. The river is to be crossed by C12 route and after the dam, go down some stairs. If the kayak is heavy loaded, as was mine, you can not enter the river just there because there are some stones. You must walk downstream about 20 m to reach an appropriate place.

km 112 [R] Flix's wharf

Train station

Where to stay

Hotel Nou Casino, near the station

Sr. Stroof 1

977 412 057, 977 410 751

Flix has a population of 4.300. Its castle belong once to the knights templar.

After the meander I see soon the great chimney of the nuclear plant.

km 106.8 [L] Ascó's lock (!)

In front of the Ascó nuclear plant there is a little lock without any facility to land. You have to get out of the kayak on the left shore, carry it over the rocks and get again into the river. Although there is no strong current, it's really uncomfortable.

km 104.7 [R] Ascó's wharf

Train Station

Where to stay: Mas la Sènia. Afores 8, pol8. parcela 211. 977 40 60 70, 605 31 78 83

Ascó was also a templar village. It was a farming village until two nuclear plants were built in the 80s.

km 101.5 [L] Vinebres's wharf

Where to stay

Hostal Sant Miquel: c. Sant Miquel 48, 977405811